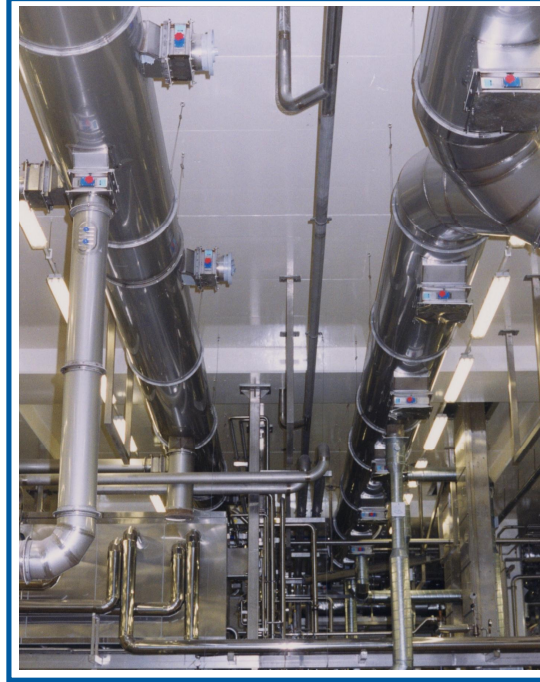


Müller



Project:	Müller
Sector	Industrial
Client:	Müller
Contractor:	Müller
Value (approx.):	£1.25 Million
Completion Date:	2002
Description of Works:	<p>Dairy company Müller, have extended their UK factory to accommodate a substantial increase in production. First class operating conditions will be achieved in the £40 million factory with a £3 million HVAC package. This included £1 million of supply and exhaust ductwork by Hargreaves, who have extensive food industry experience, including projects with Heinz and Kellogg's.</p> <p>The development provides a high quality working environment that meets current needs and adapts to cope with future demand. Within the two-storey building, fruit processing is concentrated on the upper floor, while carton filling and packing are located on the lower floor. HVAC plant is housed in an energy tower the full height of the building. This contains four AHU's, two with a capacity of 14m³s to service the ground floor. Two of have a capacity of 11m³s and service the upper floor.</p> <p>To meet the stringent hygienic standards demanded in this type of manufacturing environment all ductwork in the food production areas is made from grade 304 stainless steel with a 2B finish. This is of all-welded construction to eliminate seams and dust traps. Hangars and fittings are also stainless steel and ductwork is delivered to site wrapped and sealed to prevent contamination.</p> <p>Hargreaves standard access hatches, a one-piece pressing with smooth lines, are spaced at 10 metre centres to permit ease of cleaning. Ancillary areas such as offices, toilets and changing rooms are fitted with standard DW-144 galvanised ductwork.</p> <p>Mechanical services have been designed by the Manchester office of consulting engineers Hoare Lea. Their brief was to create a high quality environment, adaptable to future needs and with energy saving features. Flexibility is assured by the use of inverter drives on the fans so that air volumes can be matched precisely to requirements.</p> <p>Hargreaves ductwork for the process plant has fittings to accommodate future plant upgrades.</p> <p>There is no artificial cooling on the AHU's, but provision has been made to retrofit this if it becomes necessary. Thermal wheels allow the system to strip heat from the exhaust</p>

	<p>air stream and temper incoming air to reduce energy needs. For hygiene reasons all inbound air is filtered and a slight positive pressure is maintained in the building to exclude dust and contaminants. All HVAC systems are under the control of a Honeywell Elm building management system.</p> <p>With a 36 per cent share of the UK yogurt market, Müller are already market leaders. The new investment shows their commitment to retaining their lead position in the UK by producing in a high quality environment.</p>
--	---